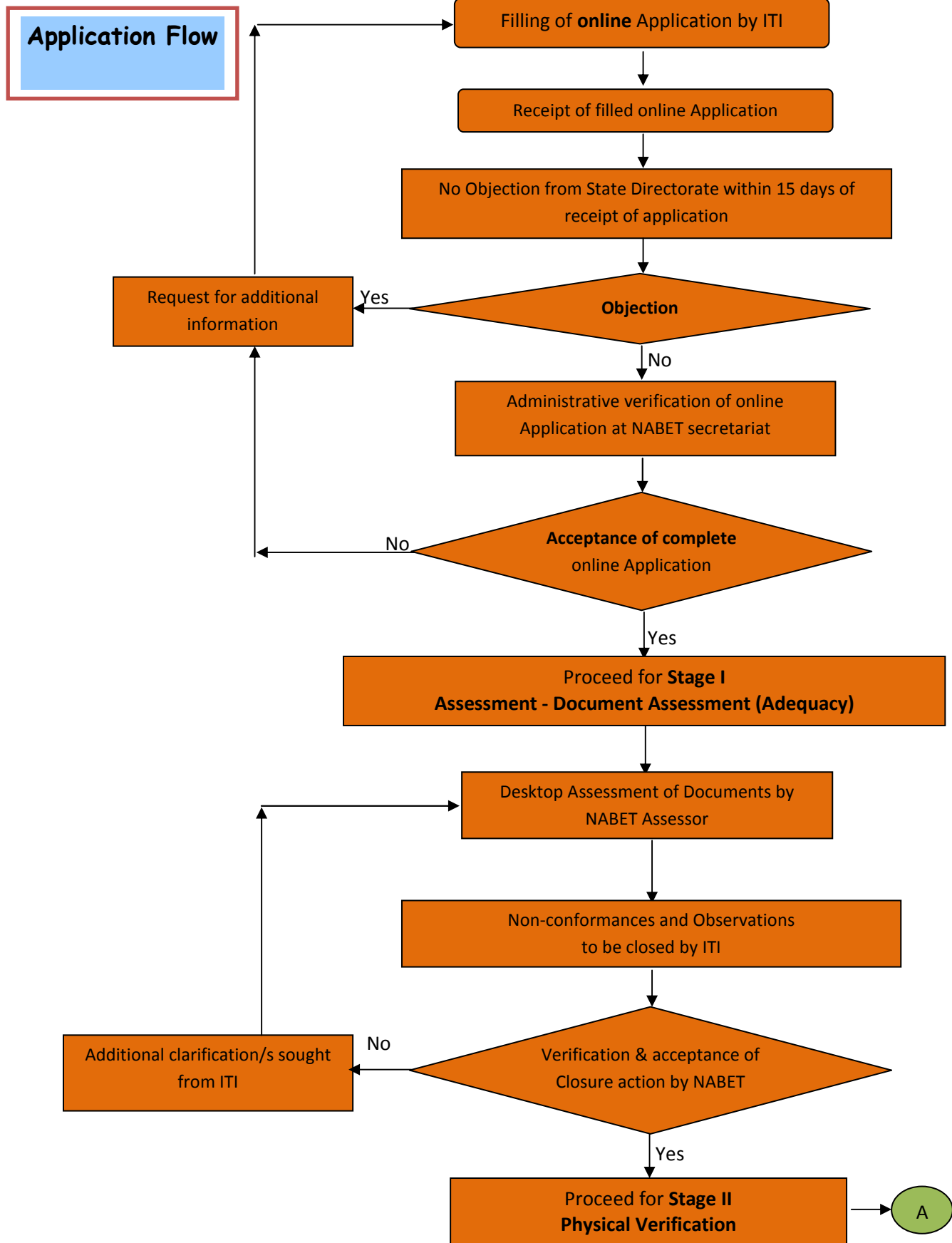
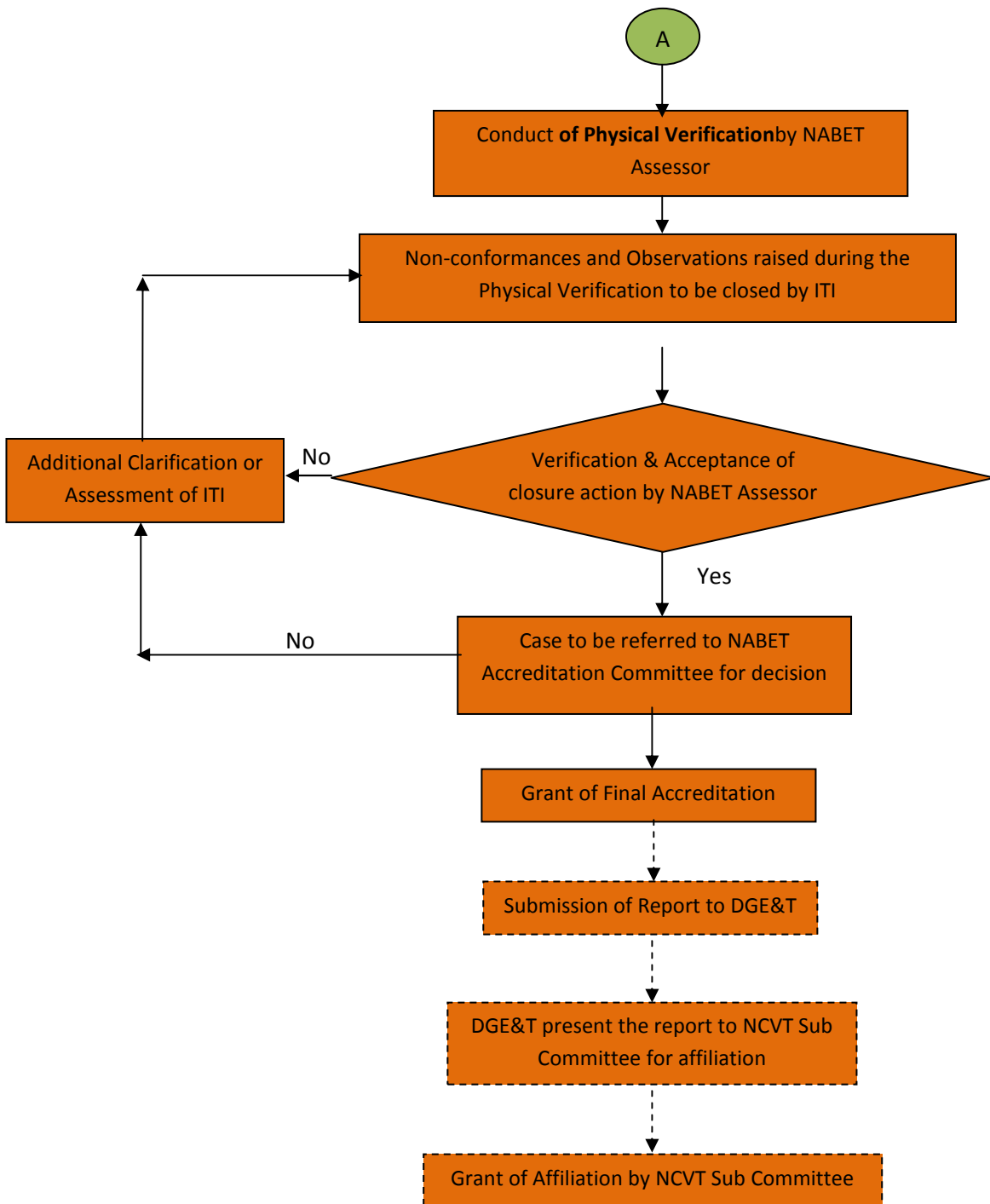


## Guidelines for opening of new 'Industrial Training Institutes' & addition of trades/units in existing institutes.

1. w.e.f. 1<sup>st</sup> September 2012, Quality Council of India (*set up jointly by the Govt. of India and the Indian Industry represented by three following industry associations namely ASSOCHAM, CII and FICCI*) has been engaged to carry out accreditation/inspection of Govt. & Private ITIs and to guide the institute for improving the standards in accordance with the standard set by National Council for Vocational Training.
2. Norms & Standards for the trades are available on DGE&T website under the icon **'Craftsmen Training Scheme'** <http://dget.nic.in/content/innerpage/craftsmen-training-scheme-cts.php>.
3. Infrastructure may be created according to 'norms & standards' laid down for respective trades under 'National Council for Vocational Training'.
4. All the procedures for accreditation/inspection for grant of affiliation are available on the web portal developed and maintained by the 'Quality Council of India' [http://nabet.qci.org.in/skill\\_training/GPITI.asp](http://nabet.qci.org.in/skill_training/GPITI.asp). Assessment process & time flow diagram are enclosed at Annex. I & II.
5. Similar procedure is applicable addition of trades/units in existing institutes.
6. For any kind of assistance/guidance, contact details available at link [http://nabet.qci.org.in/skill\\_training/contactgpiti.asp](http://nabet.qci.org.in/skill_training/contactgpiti.asp) may be used.

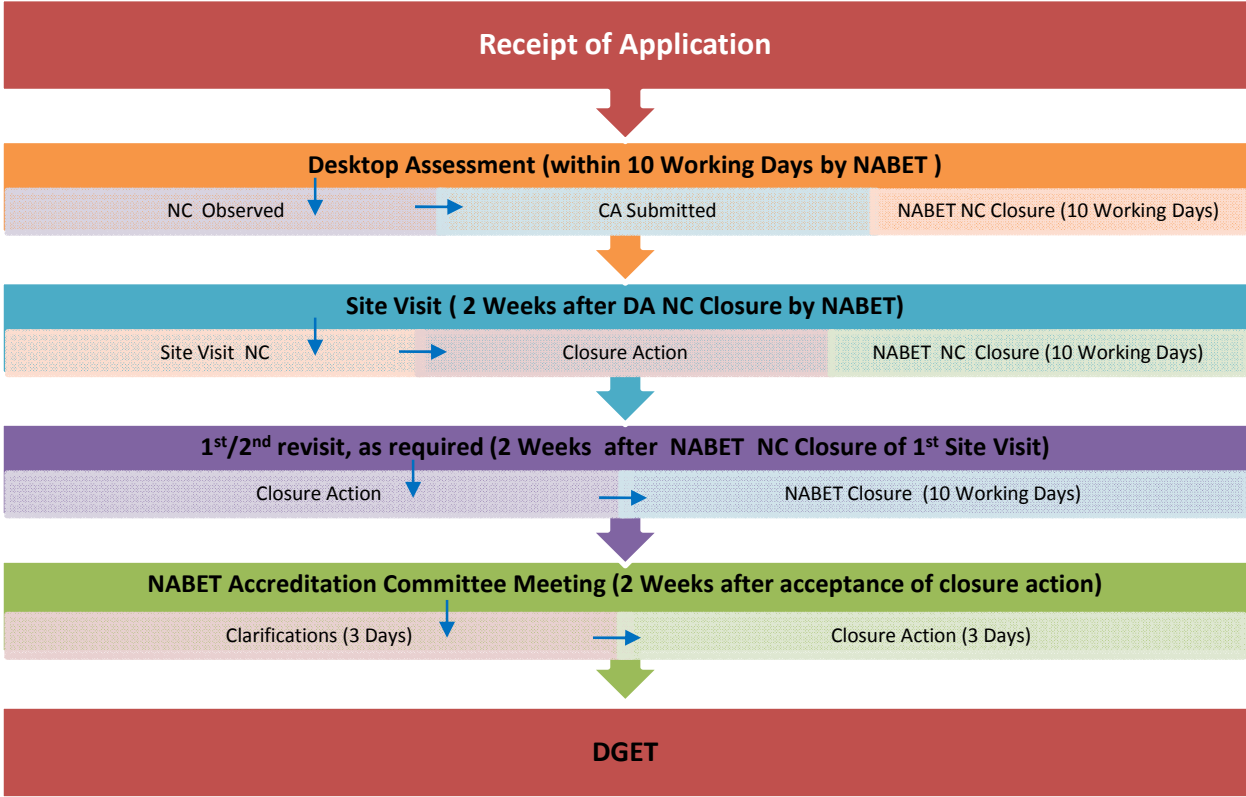
# Assessment Process





**(DGET-19/16/2012-CD dated 27.11.2003)**

**Time Flow Diagram of Accreditation of ITIs by QCI**



- QCI** = Quality Council of India
- NABET** = National Accreditation Board for Education & Training
- DA** = Desktop Assessment by QCI
- CA** = Closure Action
- NC** = Non Conformity